



peopleinproperty

## Preshaw Crescent, Mitcham London - 6 bedroom Semi-Detached



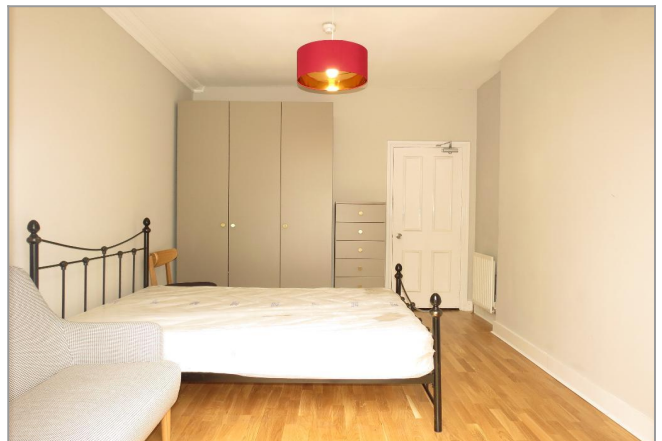
£773 per week

People in Property are delighted to present this spectacular 6 bedroom house situated over 3 floors. The property has just been completely renovated to a very high standard and is offered fully furnished with top quality furniture. The ground floor consists of 2 double bedrooms, a shower room, large fully fitted modern kitchen with dining space leading out onto a spacious private rear garden. The first floor consists of a further 3 double bedrooms and a fully fitted bathroom. The top floor features the final double bedroom which benefits from an en-suite shower room.

- Immaculate Condition
- Top Quality Furniture
- Six Double Bedrooms
- Great Transport Links
- Ideal for Professional Sharers
- Available Now



peopleinproperty



### Further Information

For more details please call us on **020 8944 7200** or send an email to [info@peopleinproperty.co.uk](mailto:info@peopleinproperty.co.uk).

Please note it is not our company policy to test services, heating systems and domestic appliances, therefore we cannot verify that they are in working order. Prospective purchasers are advised to obtain verification from their solicitors and/or surveyors.