



peopleinproperty

GFF, Milner Road, South Wimbledon London - 2 bedroom Flat



£475,000

People in Property are delighted to offer this well presented 2 bedroom ground floor conversion on to the sales market. The property is located within a short walking distance to South Wimbledon station and Wimbledon town centre, offering a good size living room a double bedroom a single bedroom fully fitted kitchen bathroom/shower and a good size private rear garden. Excellent opportunity for a first time buy or rental investment.

- Reception Room
- Double bedroom
- Single bedroom
- Fully Fitted Kitchen
- Bathroom/Shower
- Private Rear Garden



peopleinproperty



Further Information

For more details please call us on **020 8944 7200** or send an email to info@peopleinproperty.co.uk.

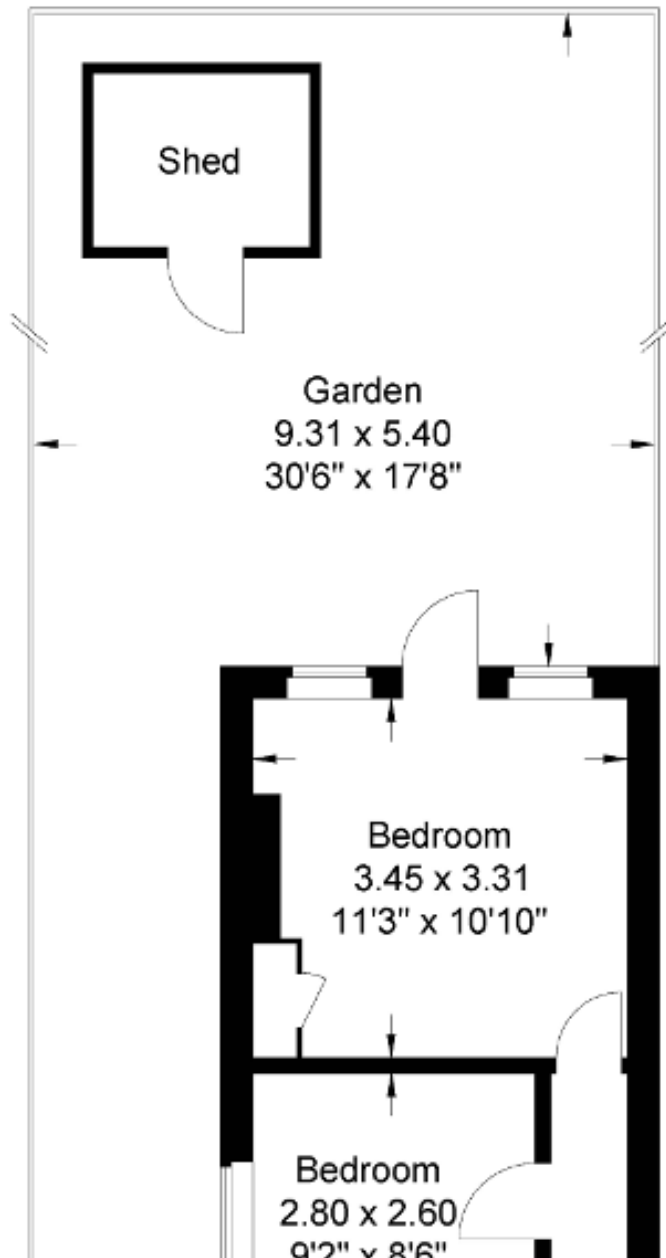
Please note it is not our company policy to test services, heating systems and domestic appliances, therefore we cannot verify that they are in working order. Prospective purchasers are advised to obtain verification from their solicitors and/or surveyors.



peopleinproperty

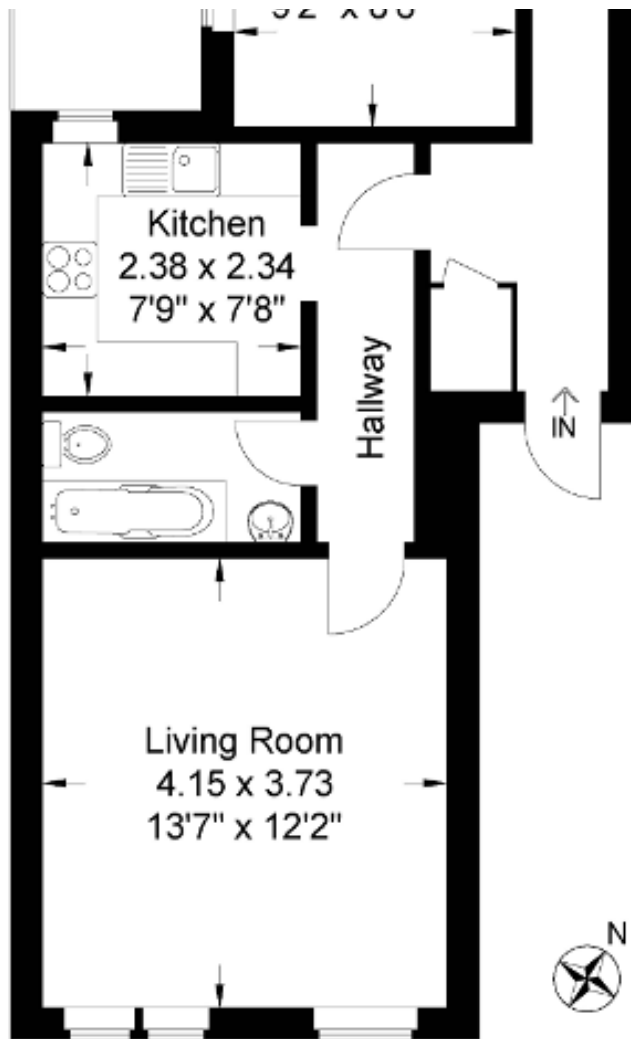
Milner Road

Approximate Gross Internal Area
54.85 sq m / 590.40 sq ft
(Excluded Shed)





peopleinproperty



Ground Floor

Illustration for identification purposes only, measurements are approximate, not to Scale