



peopleinproperty

## Rectory Close, Raynes Park London - 3 bedroom Terraced



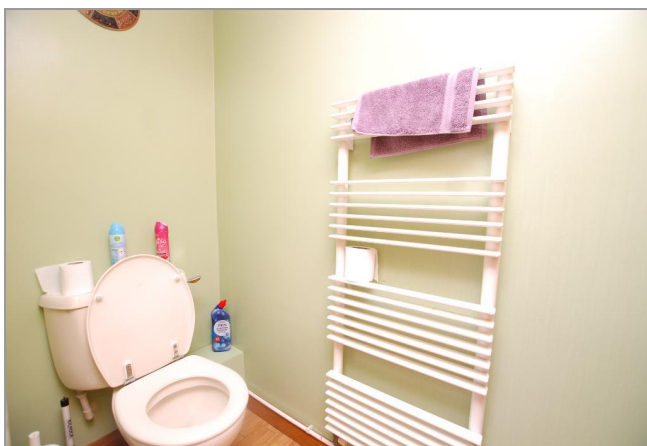
£485 per week

People in Property are delighted to offer this well presented three bedroom terraced house to the Lettings Market. Located on a very quiet cul-de-sac a short walk from Raynes Park train station, the property consists of a large reception room with dining space, modern kitchen with breakfast table, downstairs WC, large private garage and off-street parking, private garden, two double bedrooms with built in wardrobes, single bedroom that can also be used as an office and fully fitted family bathroom. The property is offered fully furnished.

- Large Reception Room
- Fully Fitted Modern Kitchen
- Off Street Parking
- Private Garage
- Downstairs WC
- Private Garden
- Two Double Bedrooms
- Single Bedroom



peopleinproperty



### Further Information

For more details please call us on **020 8944 7200** or send an email to [info@peopleinproperty.co.uk](mailto:info@peopleinproperty.co.uk).

Please note it is not our company policy to test services, heating systems and domestic appliances, therefore we cannot verify that they are in working order. Prospective purchasers are advised to obtain verification from their solicitors and/or surveyors.