



peopleinproperty

Dorien Road, Raynes Park London - 1 bedroom Maisonette



£311 per week

People in Property are delighted to present this exceptional ground floor apartment to the lettings market. Finished to a very high standard property has a lot to offer and it will be perfect for a couple or a single occupier. It comprises a great open plan living/dining area with a fully fitted modern kitchen with french doors leading to a private half decked garden, good size double bedroom and a stunning bathroom. Further property benefits from being located in popular Apostles area in Raynes Park within less than 20 minutes train journey to central London.

- **Open Plan Living Room/Kitchen**
- **Dining Space**
- **Large Private Rear Garden**
- **Recently Redecorated**
- **Modern Bathroom**
- **Patio**



peopleinproperty



Further Information

For more details please call us on **020 8944 7200** or send an email to info@peopleinproperty.co.uk.

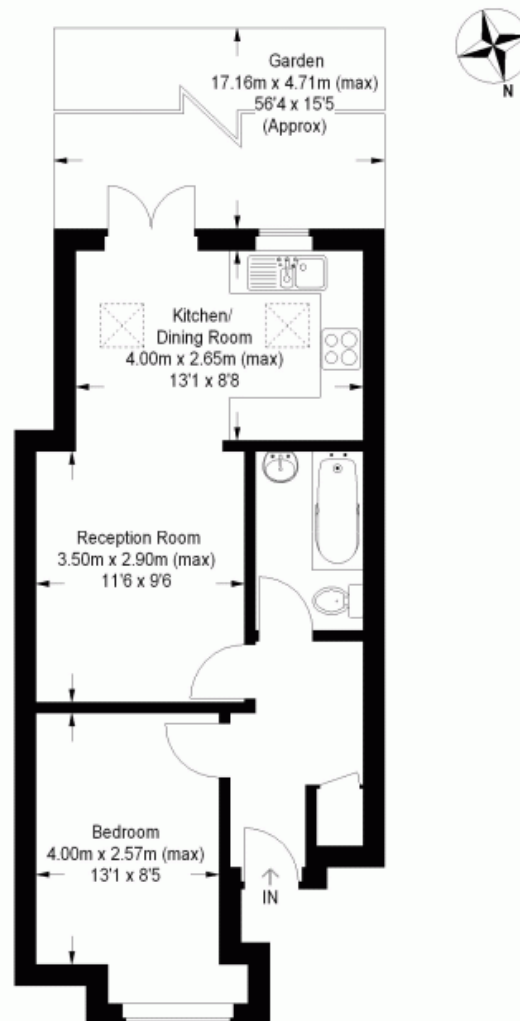
Please note it is not our company policy to test services, heating systems and domestic appliances, therefore we cannot verify that they are in working order. Prospective purchasers are advised to obtain verification from their solicitors and/or surveyors.



peopleinproperty

Dorien Road, SW20

Approximate Gross Internal Area = 42 sq m / 452 sq ft



This floor plan is for representation purposes only and is not drawn to scale. Whilst every attempt has been made to ensure its accuracy measurements are approximate only and should be checked before making any decisions reliant upon them.

Copyright Bespokeplans.co.uk 2013
(ID58162)